

ProtoGel® Quick-Cast 12%



- Economical and Convenient One Bottle System for Casting SDS-PAGE Gels
- Ready to Run in 25 Minutes!
- Ideal for Western Blotting Applications
- Precast Convenience at a Fraction of the Price

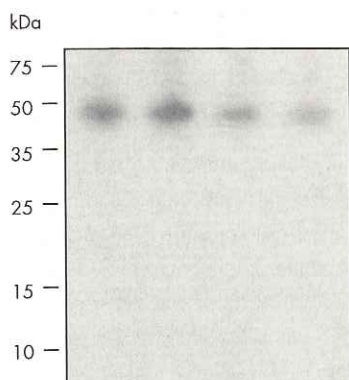
With the introduction of ProtoGel Quick-Cast, the time required for casting gels for protein separation has been reduced from 2 hours to under 25 minutes, and the number of steps involved has been cut from 10 to only 3. With ProtoGel Quick-Cast, simply measure out the amount needed, add initiators and cast the gel. No mixing, no multiple measurements, no need for a second casting to produce a stacking gel. Just initiate, cast, and be ready to run in 20 minutes. With the reduced casting time, western blots can be finished within a regular working day:

Casting (prep and polymerization)	30 minutes
Running	1 hr
Transfer (including prep time)	1.5 hr
Blocking	1 hr
Probing (primary and secondary)	2 hr
Washing	1.5 hrs
Detection	30 min
Total Time	8 hr

APPLICATIONS

Gel preparation:	2-Dimensional electrophoresis75
Native protein Gels.....	Western blotting87
Denaturing protein gels.....	Peptide Mapping68
Gradient gels.....	Protein Purification69
Molecular wt. determination	68

ProtoGel QuickCast is Ideal for Western Blotting



Method of Use:

ProtoGel Quick-Cast contains the monomers and buffer components to produce a 12% gel.

1. Measure out the volume of ProtoGel Quick-Cast needed to fill the cassette - typically 10ml for a mini-gel, 15ml for two.
2. Add 100 microliters of fresh 10% APS and 10 microliters of TEMED per 10ml ProtoGel Quick-Cast. Mix briefly and pour into the gel cassette.
3. Insert comb and allow to polymerize at room temperature for 20 minutes.

ProtoGel Quick-Cast gels are run in standard 1X Tris-Glycine SDS. Electrical parameters will vary from apparatus to apparatus, but typically gels are run at 170V for 60 minutes.

ProtoGel Quick-Cast gels require no special handling after the run. Simply stain according to standard protocols.

Product Name	Cat. No.	Size
ProtoGel Quick-Cast 12%	EC-895	100 ml (13 gels) 450 ml (60 gels)